



Guam Early Hearing Detection and Intervention Project

4th Quarterly Meeting
Welcome





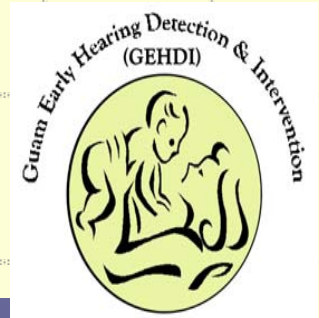
Welcoming

Chair, Mr. Joe Mendiola

Agenda

- Sign In
- CDC Presentation By
 - Marcia Victor and Dr. June Holstrum
- Project Updates
- Parent Support Group Activities
- Updates on the NEW MCH EHDI Grant
- Open Discussion
- Meeting Adjourn





CDC Presentation

Marcia Victor and Dr. June Holstrum



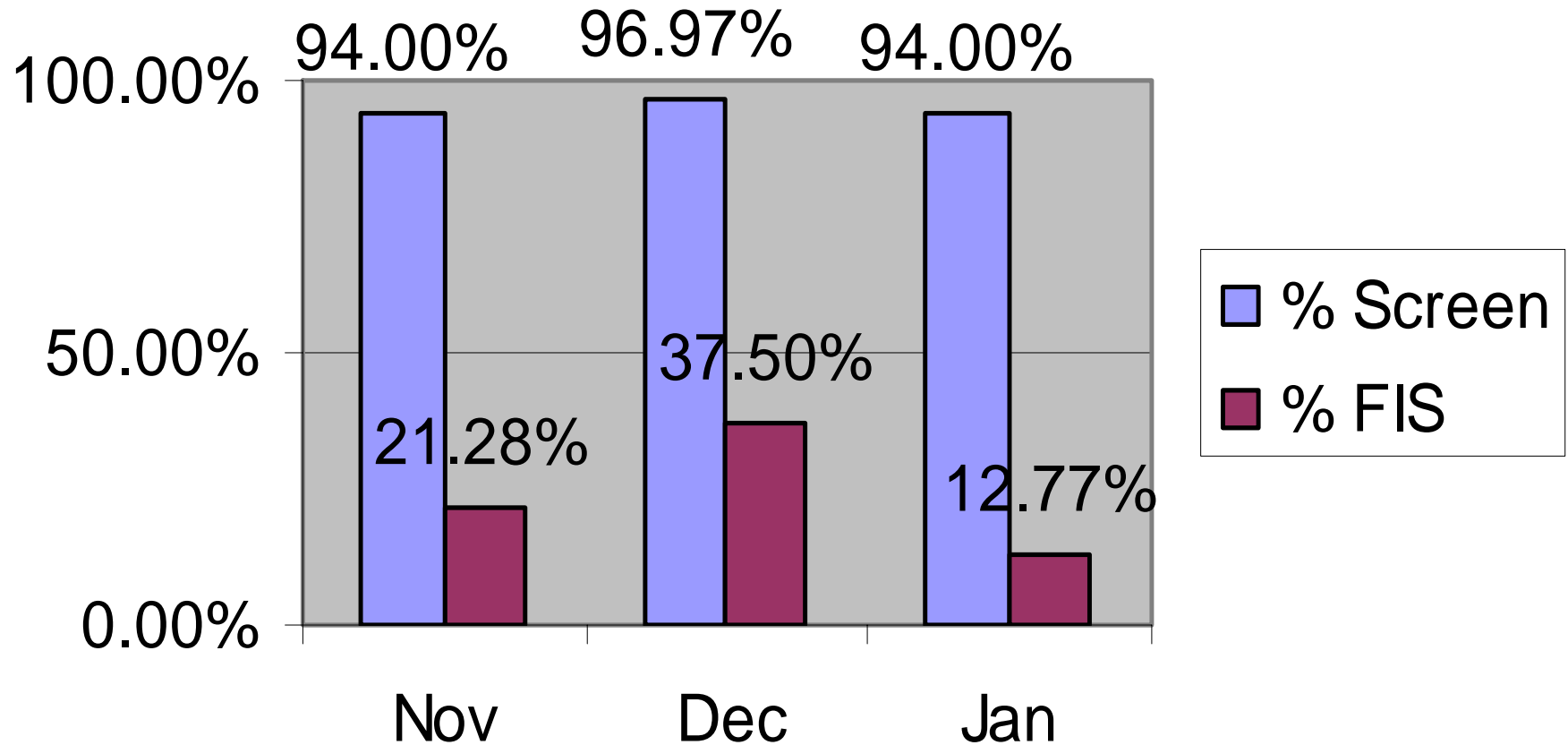
Project Updates

Initial Screen by 1 month

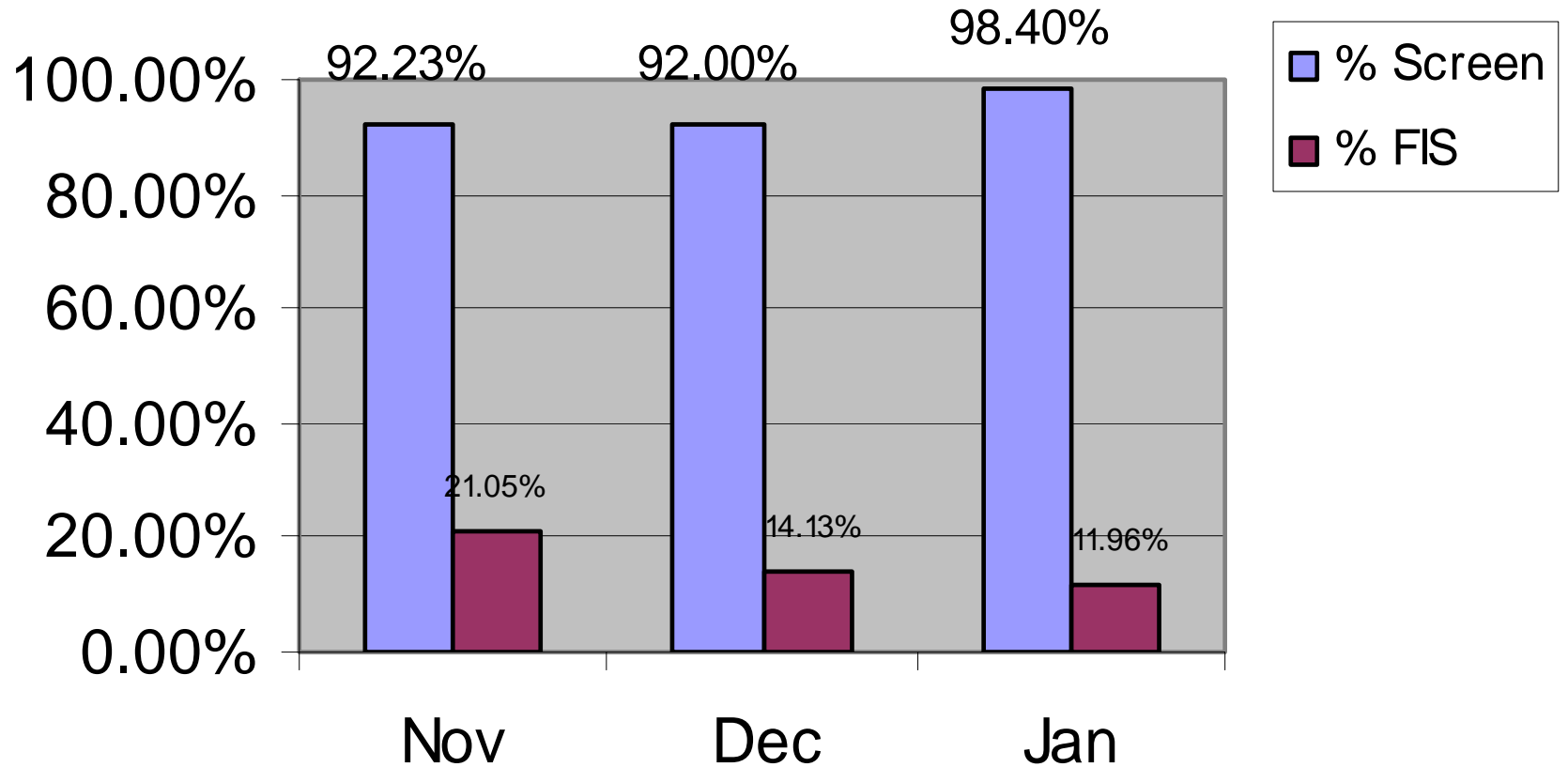
November 2005 – January 2006



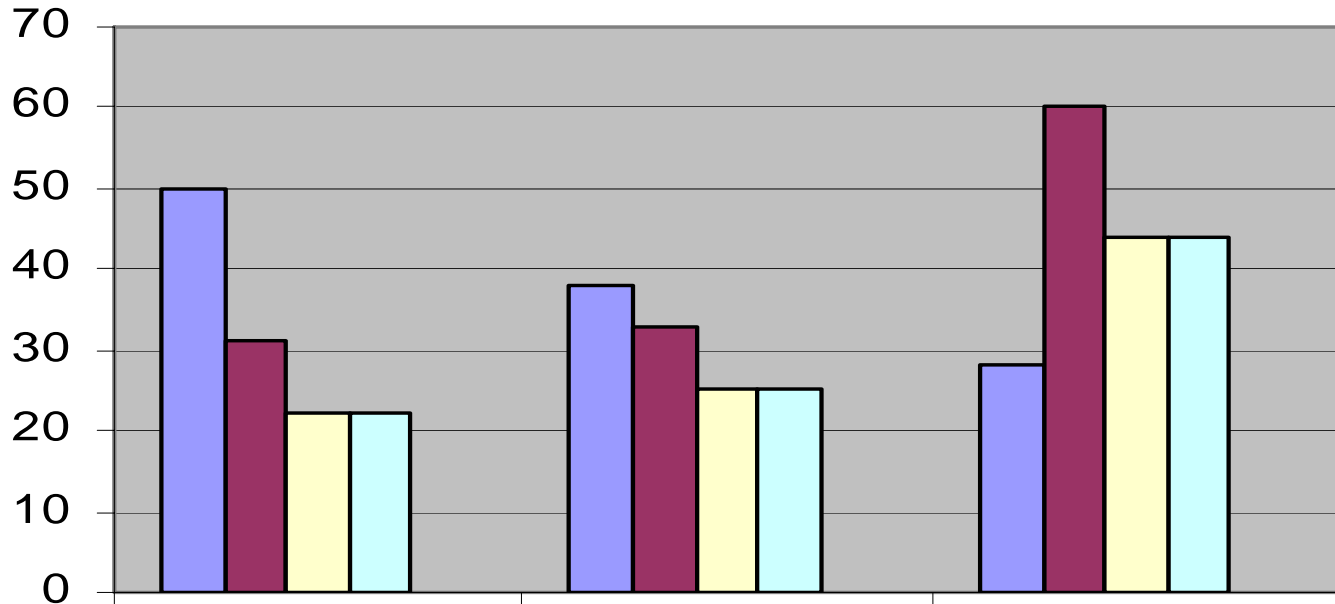
Sagua Managu Hearing Screening Nov. 2005 - Jan. 2006



GMHA Hearing Screening Data Nov. 2005 - Jan. 2006



Loss to Follow-up for Intial Screening Nov. 2005 - Jan. 2006



	Nov	Dec	Jan
Failed IS	50	38	28
Scheduled	31	33	60
Screen	22	25	44
Pass	22	25	44
Referred	0	0	0

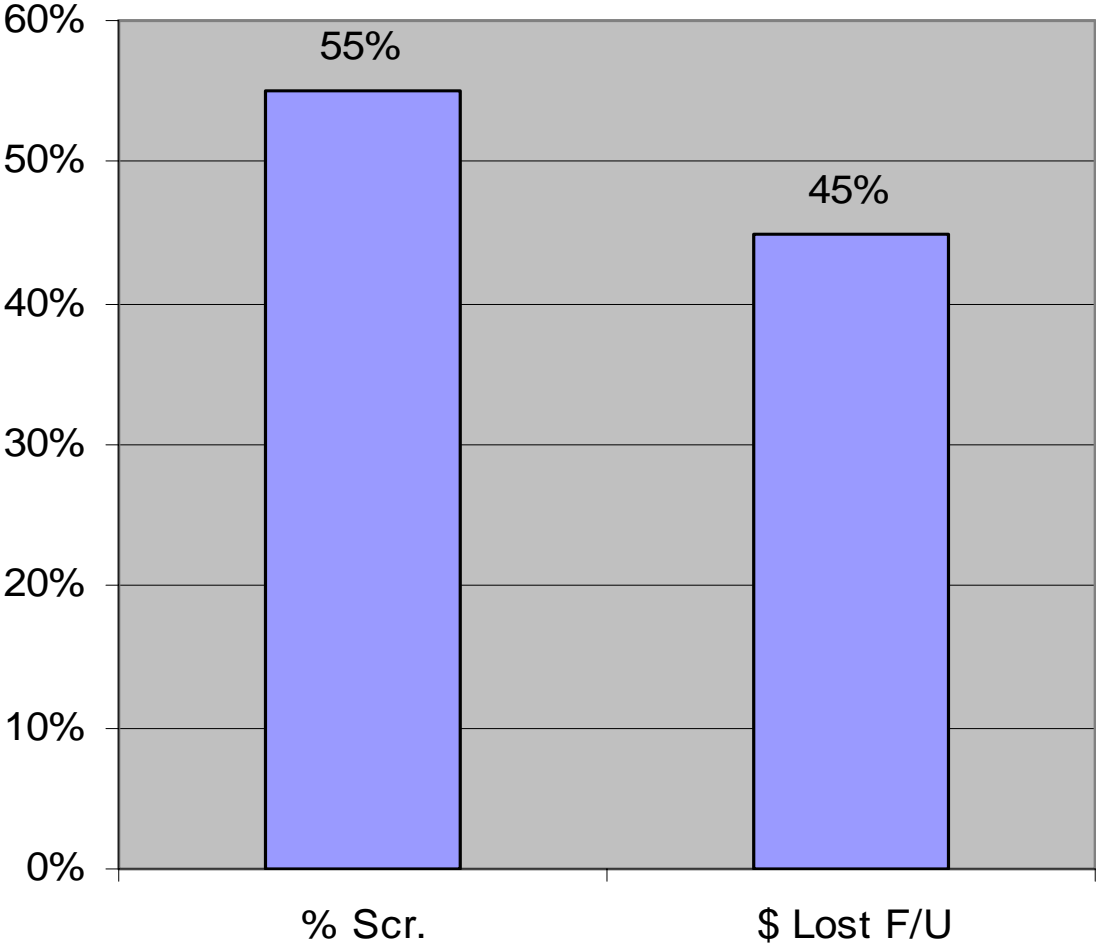
Referrals for Audiological Evaluation (2005)



Re-screen for Possible Late Onset of Hearing Loss

Infants with ***“HIGH RISK FACTORS”*** should be screened by 6 months of age

**High Risk Data
Oct 2005 - Jan. 2006**



Parent to Parent Activities

Friday, February 17, 2006

Belinda Gonzalvo

Lorell Loosle


Public Awareness Materials

Guam EHDI Data Tracking and Surveillance

Integrating the Guam Child Link
System with GMHA and Sagua
Mañagu



Recommendations for “Medical Home” Initiatives

- Identify small core group of physicians to
 - Presentation with DPHSS Nurses on the Medical Home
 - Parent Training on the Medical Home
 - Other suggestions:
 - Learning points parent video
 - Conference with Physician (Guam Champion
- 



Open Discussion





Meeting Adjourn

Thank You for Coming